

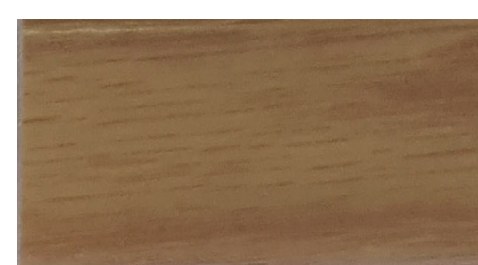
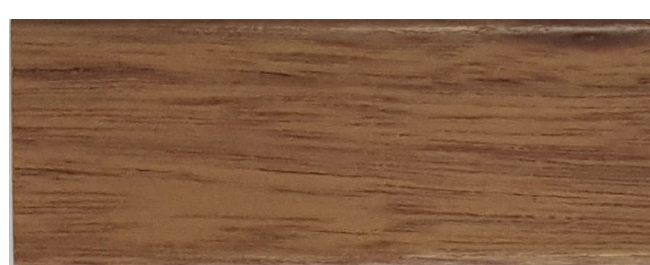
# Barwy Drewna - półmat

DREWNO SOSNY ↓

DREWNO MERANTI ↓

↓ DREWNO DĘBU

PINIA



P: TM-9072/13

N: TM-9058/13

STARA SOSNA



P: TM-9073/13

N: TM-9059/13

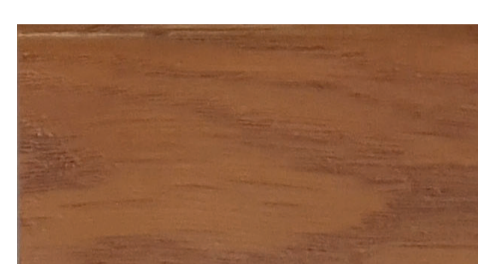
CYPRYS



P: TM-9074/13

N: TM-9060/13

IROKO



P: TM-9073/13

N: TM-9061/13

I: impregnat GORI 356-00

P: podkład AQUAPRIMER 2900-22

M: międzywarstwa AQUAPRIMER 3130-02

W: wypełniacze TEKNOSEAL 4009-00 / 4000-00

N: lakier nawierzchniowy AQUATOP 2600-94

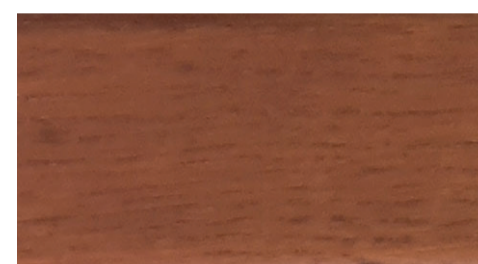
KASZTAN



P: TM-9073/13

N: TM-9062/13

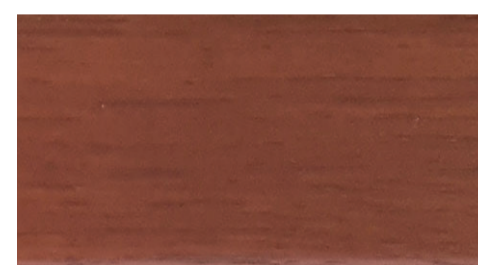
SIPO



P: TM-9075/13

N: TM-9063/13

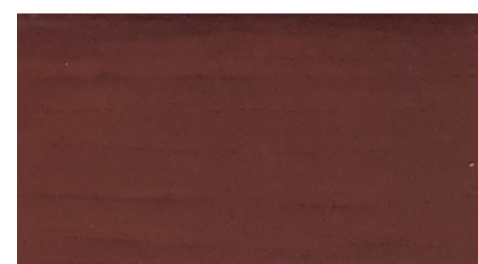
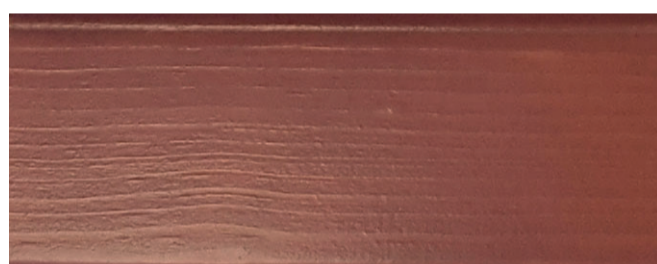
FRAMIRE



P: TM-9075/13

N: TM-9064/13

SAPELLI



P: TM-9075/13

N: TM-9065/13

Kolorystykę wzorów należy traktować tylko jako wskaźnik, gdyż w zależności od gatunku drewna, jego naturalnej barwy oraz grubości nałożonej warstwy lakieru nawierzchniowego mogą występować różnice w odcieniach poszczególnych kolorów.

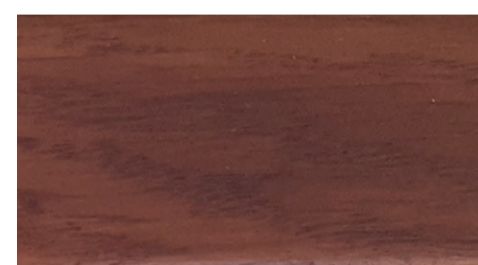
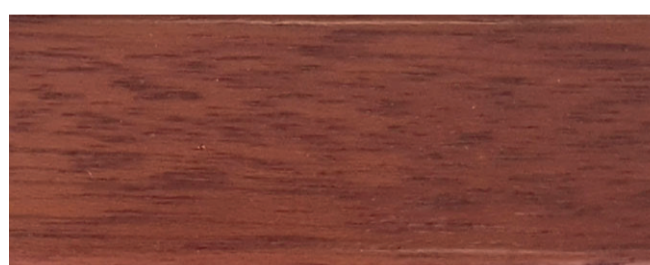
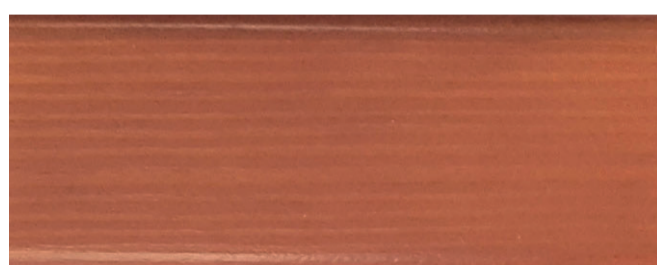
DĄB



P: TM-9075/13

N: TM-9066/13

CALVADOS



P: TM-9076/13

N: TM-9067/13

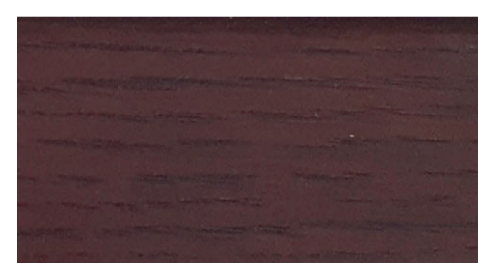
ORZECH



P: TM-9077/13

N: TM-9080/13

KEMPAS

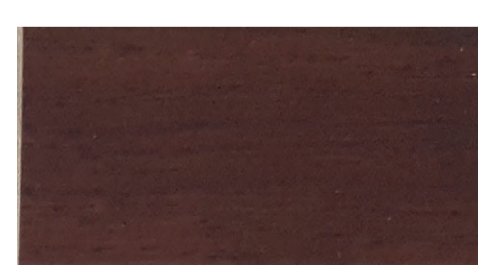
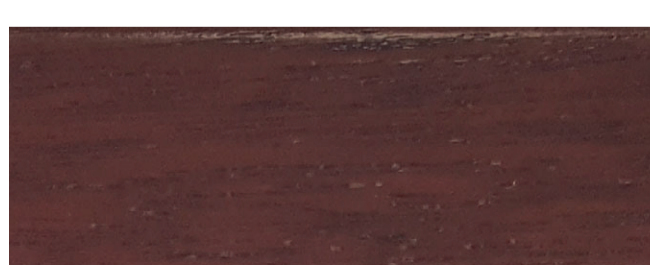
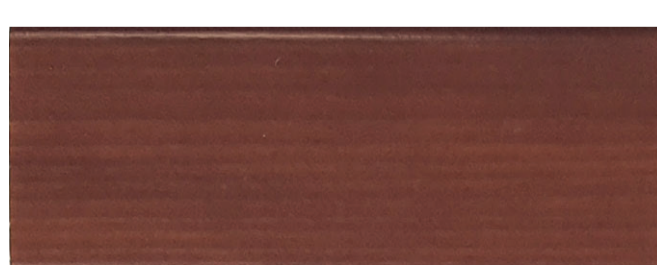


P: TM-9076/13

N: TM-9068/13

Więcej informacji na temat produktów i systemów farb przemysłowych Teknos na stronie [www.teknos.com](http://www.teknos.com)

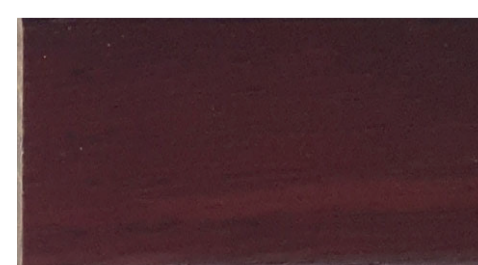
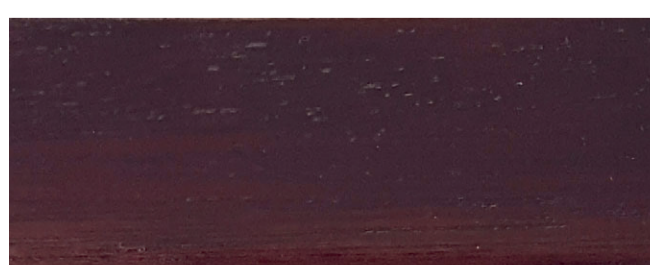
AFROMOZJA



P: TM-9077/13

N: TM-9069/13

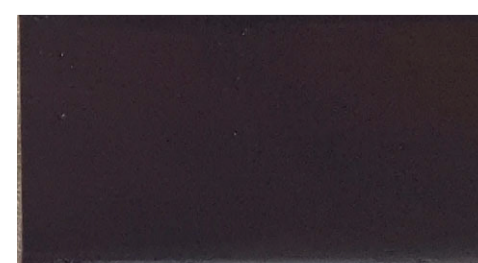
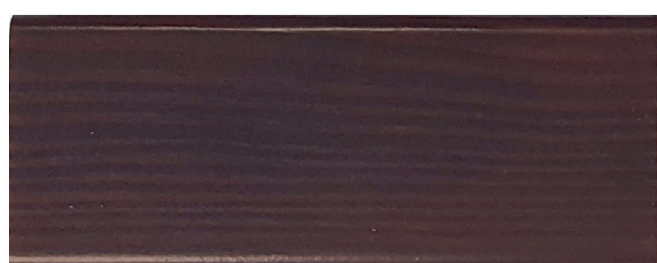
WIŚNIA



P: TM-9077/13

N: TM-9070/13

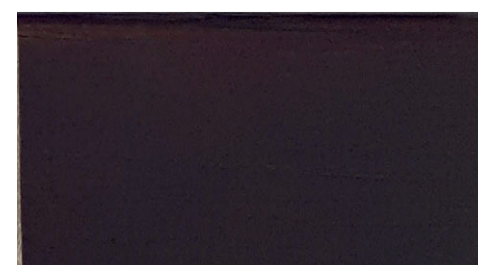
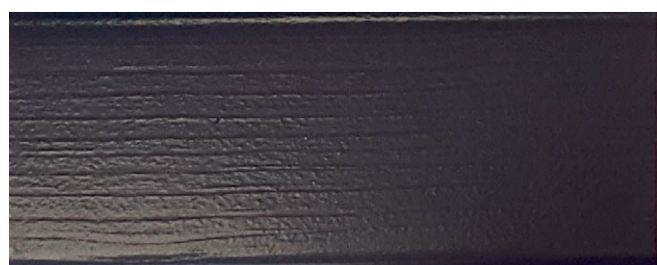
WENGE



P: TM-9077/13

N: TM-9099/13

ACAJOU



P: TM-9077/13

N: TM-9071/13